



Wythenshawe Good Neighbours

Christmas Card Design Competition 2021

for people aged 55 & over who live/work/study in Wythenshawe

Design theme for artwork or photography:



You can create designs or photographs based on any festive theme: from traditional subjects like fir trees, baubles, snow-scenes, Christmas puddings, stars, Santa and his elves, reindeers and so on - to something abstract and highly original. We are open to imaginative interpretations.

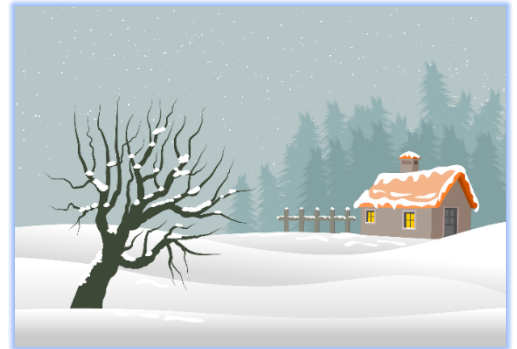


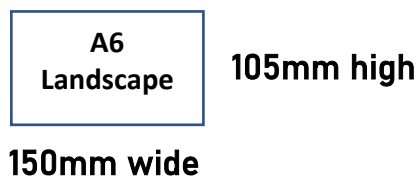
Image by [aalmeidah](#) from [Pixabay](#)



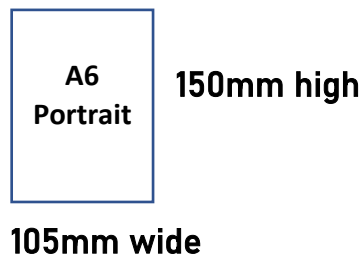
The rules:

- **To enter, you must be aged 55 or over and live/work or study in Wythenshawe.**
- There is no charge to enter the competition.
- You can submit up to 3 paintings, sketches/drawings or photographs.
- Please create your design on good quality plain paper.
- **Create your painting/sketch/drawing to A6 dimensions only.** Either:

1) Landscape format: 105mm high x 150mm wide (4 inches by 6 inches)



2) Portrait format: 150mm high x 105mm wide (6 inches by 4 inches)



- If you are submitting a black and white or colour photograph, it must be provided digitally at a large format e.g. minimum of 1meg in size (you can email or WhatsApp the photograph to us). Please ring Kathryn for advice on how to do this on: 07723 354 198 or email her at: WGNresilience@outlook.com
- **Do not add glitter or stick materials** (collage-style) to your design, as we will not be able to reproduce this effect when printing the cards.

How to enter:

- **Submit your original artwork or photograph by midnight on Fri 19 November.**
- Make the design as high quality as you can, so it will reproduce well in print.
- **Only design the front of the A6 card.** Wythenshawe Good Neighbours will be responsible for the rest, including the message on the inside.
- **Please do not sign or add your name on the actual design** (Wythenshawe Good Neighbours will credit the winner in type inside or on the back of the card).
- However, do not forget to add your name on the back of your artwork/ or on a separate piece of paper, so that we know who the artwork is from, **along with your preferred contact telephone number or email.**
- Please note: the panel members will judge all artworks/photographs and select the winner without knowing the identity of the artists or photographer.

How to submit your painting/s, drawing/s or photograph/s:

- **Give it to us personally** (at our Coffee Morning or Lunch on Tuesdays).
- **Post it/them to our office address:** Wythenshawe Good Neighbours, Room 6 Thorngrove House, 9 Thorngrove Avenue, Brooklands M23 9PQ.
- **You can provide us with a photocopy of your artwork** (if you win, we will contact you for the original). **If you submit the original, we advise you to put it in a hard-backed envelope and use a trackable postal service.** Make a note on the back of your artwork that you want it returning. Keep receipts, then we can reimburse you. Please note: we can't be responsible if your artwork goes missing in the post.
- **Ask us to collect it** (if we can, we will).
- **Photographs:** please see overleaf regarding how to submit your photograph/s.
- We will return each submission we receive to the creator of the artwork.
- **Any artwork/photo you submit must be your own original work:** i.e. not a copy of someone else's. You must not submit someone else's artwork/photography under your name. This is vital regarding copyright legislation.
- **By submitting your artwork/photograph to this Christmas Card Competition you are giving us permission - should your artwork/photo win - to reproduce it (without fee) on Wythenshawe Good Neighbours' Christmas cards 2021.** The cards will be sold to raise funds for WGN Community Interest Company (not-for-profit organisation) in 2021 and possibly up to 2023. The design will also feature on our digital platforms.

Winner's prize:

- Our judging 'panel' will select the winning design by **Thu 25 November**. The winner will be notified by telephone or email. The panel's decision is final.
- **Main prize - the satisfaction of seeing your winning design in print (with your name featured on the card)! We will be selling the cards from early December at selected local community venues to raise funds for our group.** In addition, we will produce an email version of the winning design for our team to send to professional contacts.
- **The winner will receive 20 complimentary cards and a surprise gift.**